

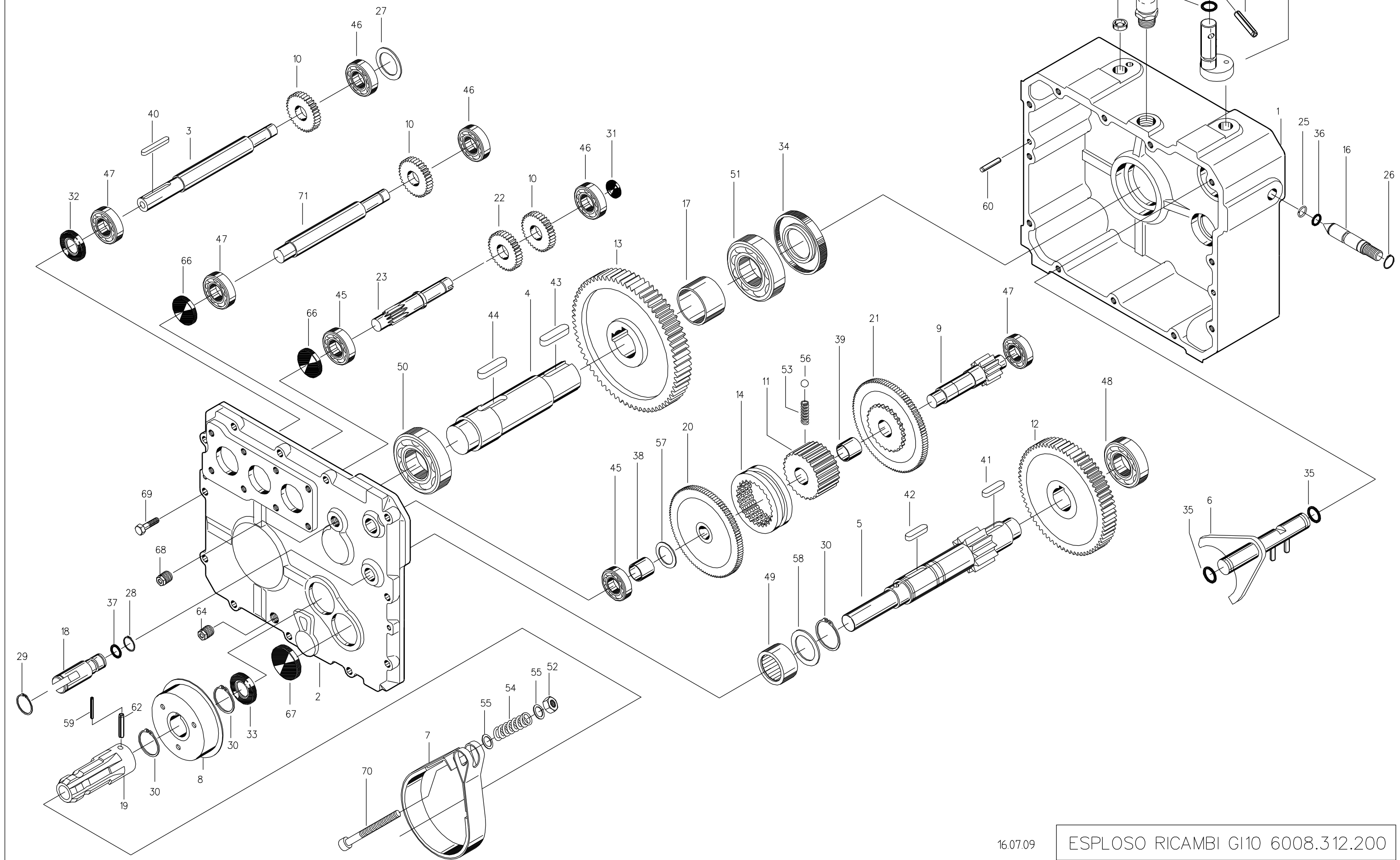
CUSCINETTI DI MARCA PRIMARIA
HIGH QUALITY BEARINGS

ATTENZIONE: PIANO TAMBURO CON
FORI FILETTATI SU QUESTO LATO

ATTENZIONE ! WARNING ! ATTENTION ! ACHTUNG !

GLI ALBERI CONTRASSEGNA TI NON SONO PROTETTI. OGNI COMPONENTE IN ROTAZIONE DEVE AVERE UNA PROTEZIONE SPECIFICA O INTEGRATA CON LA MACCHINA. BIMA DECLINA OGNI RESPONSABILITA' IN CASO LE IDONEE PROTEZIONI NON SIANO PREVISTE.
ROTATING SHAFTS MARKED ARE NOT SHIELDED. ANY SHAFT AND COUPLING NOT GUARDED BY LOCATION MUST BE SHIELDED BY AN INTERACTIVE GUARDING SYSTEM. BIMA DECLINES RESPONSABILITY IF PROPER GUARDS ARE NOT PROVIDED AND MAINTAINED.
DIE MIT GEKENNZEICHNETEN WELLEN SIND FREILEGEND. JEDES DREHENDE BAUTEIL MUSS EINEN SPEZIFISCHEN BEI NICHT GEEIGNETEN ODER UNZUREICHEND INSTANDGEHALTENEN SCHUTZVORRICHTUNGEN LEHNT BIMA JEGLICHE VERANTWORTUNG AB.
LES ARBRES REPEREES PAR SONT SANS PROTECTEUR. CHAQUE COMPOSANT EN ROTATION DOIT ETRE OBLIGATOIREMENT PROTEGE PAR UN BOL SPECIFIQUE. BIMA DECLINE TOUTE RESPONSABILITE CONTRE TOUTE NEGLIGENCE.

RAPPORTO RATIO RAPPOR VERHALTNIS	RAPPORTO RATIO RAPPOR VERHALTNIS	ENTRATA INPUT ENTREE EINGANG	COPPIA USCITA OUTPUT TORQUE COUPLE A LA SORTIE AUSGANGDREHMOMENT	MONTAGGIO ARRANGEMENT MONTAGE MONTAGE	CODICE CODE CODE BESTELLNUMMER				
X > Y	Z > Y		N x m						
266:1 108:1	4.4:1	X	1000		6008.312.200				
Peso indicativo Approximate weight Poids indicatif Gewicht ca. Kg. 39	Oil consigliato Recommended oil grade Huile preconisee Empfohlenes ol SAE 90 Kg.3.2	Materiali Materials Materiaux Werkstoff			Cuscinetti Bearings Roulement Nadellager				
		Scatola Case Boite Gehause	Alberi Shafts Arbres Wellen	Ingranaggi Gears Engrenages Verzahnung	A	B	C	D	E
		G 25	20MnCr5	20MnCr5					



BIMA TO AMADAS PIN CROSS REFERENCE

11359 Gearbox (Revised 4/3/2017)

REF #	BIMA P/N	AMADAS P/N	KEYWORD	DESCRIPTION
1	2008.001.101	11263YY	CASE	GI10, REAR HALF
2	2008.002.201	11263ZZ	CASE	GI10, FRONT HALF
3	2008.137.541	11359A	SHAFT	
4	2008.007.542	11263XX	SHAFT	35MM OUTPUT
5	2008.009.542	11359B	SHAFT	
6	2008.011.098	11263WW	SHAFT	DISENGAGE
7	2008.012.098	11263A	BAND	BRAKE AND BOLT
8	2008.135.041	11359D	HUB	THIS HUB WAS ALREADY HERE
9	2008.015.542	11263XXX	SHAFT	4TH MOTION
10	2008.028.442	11359C	GEAR	
11	2008.032.042	11263YYY	HUB	SHIFTER, INNER
12	2008.033.426	11263ZZZ	GEAR	70 TOOTH, 5TH MOTION
13	2008.038.426	11263AAAA	GEAR	53 TOOTH, FINAL DRIVE
14	2008.039.076	11263WWW	HUB	SHIFTER, OUTER
15	2008.040.098	11263KK	LEVER	CONTROL
16	2008.046.041	11263FF	PIN	DISENGAGE
17	2008.048.676	11263DDDD	SLEEVE	OUTPUT SHAFT SPACER
18	2008.052.048	11263JJJ	SHAFT	BRAKE BAND MOUNT
19	2008.055.041	11263VV	SPLINE	PTOSTUB, 1-3/8-6
20	2008.068.426	11263VVV	GEAR	LOW DRIVE
21	2008.069.426	11263UUU	GEAR	HIGH DRIVE
22	2008.070.442	11263RRR	GEAR	24 TOOTH, 3RD MOTION
23	2008.073.542	11263HHH	SHAFT	3RD MOTION
24	2022.007.042	11263AAA	CAP	SHIFT LEVER, ENGAGE/DISENGAGE
25	8001.139.000	11263EE	RING	EXT. RETAINING, (UNI7433 D14E)
26	8025.139.000	11263PPP	SNAPRING	14MM EXT. RETAINING
27	8025.151.000	11263FFF	RING	EXT. RETAINING, (DIN471 D15E)
28	8025.162.000	11263JJ	RING	EXT. RETAINING, DIN471 D16E)
29	8025.209.000	11359E	RING	
30	8025.302.000	11263Z	RING	EXT. RETAINING, (DIN471 D30E)
31	8050.008.000	11263FFF	SEAL	8 X 22 X 7
32	8050.150.000	11359F	SEAL	20 X 35 X 7
33	8050.256.000	11263F	SEAL	PTO/BRAKE (30 X 40 X 7SC)
34	8050.448.000	11263G	SEAL	OUTPUT SHAFT (40 X 62 X 10SC)
35	8075.054.000	11263BB	O-RING	1.78 X 14
36	8075.100.000	11263DD	O-RING	2.62 X 9.13
37	8075.115.000	11263CC	O-RING	2.62 X 10.78
38	8100.222.000	11263SSS	SLEEVE	18 X 20 X 15
39	8100.226.000	11263TTT	SLEEVE	20 X 23 X 15
40	8125.215.000	11359G	KEY	6 X 6 X 50
41	8125.300.000	11263EEEE	KEY	10 X 8 X 25 W/ROUNDED ENDS

BIMA TO AMADAS PIN CROSS REFERENCE

11359 Gearbox (Revised 4/3/2017)

REF #	BIMA P/N	AMADAS P/N	KEYWORD	DESCRIPTION
42	8125.306.000	11263EEE	KEY	10 X 8 X 30 W/ROUNDED ENDS
43	8125.318.000	11359H	KEY	10 X 8 X 40
44	8125.362.001	11263CCCC	KEY	12 X 8 X 30 W/ROUNDED ENDS
45	8200.128.001	11263R	BEARING	15 X 42 13 (6302 SKF)
46	8200.136.001	11263Q	BEARING	15 X 35 X 11 (6202 SKF)
47	8200.164.001	11263P	BEARING	20 X 42 X 12 (6004 SKF)
48	8200.192.001	11359J	BEARING	6205 MP
49	8200.208.000	11263V	BEARING	30 X 37 X 12 NEEDLE, (HK3012 SKF)
50	8200.240.001	11263UUU	BEARING	35 X 72 X 17 (6207 SKF)
51	8200.264.001	11263T	BEARING	40 X 80 X 18 (6208 SKF)
52	8225.251.000	11263MMMM	NUT	USEG11505915, 6MM NUT
53	8375.080.000	11263TT	SPRING	COMPRESSION, GEAR HUB
54	8375.200.000	11263B	SPRING	BRAKE TENSION
55	8500.189.000	11263LLLL	WASHER	USE G120393, 5/16 FLATWASHER
56	8525.152.000	11263SS	BALL	7/32" CHROME PLATED
57	8550.233.000	11359K	SLEEVE	
58	8550.366.000	11263AA	SHIM	30.2 X 39.8 X 1.0
59	8575.160.000	11263QQQQ	PIN	ROLL, 3.5 X 40
60	8575.275.000	11263KKKK	STUD	LOCATION, 6 X 20
61	8575.289.000	11263Y	PIN	ROLL 6 X 39
62	8575.291.000	11263X	PIN	ROLL 6 X 40
63	8600.120.000	11359L	PLUG	D 15 E
64	8600.144.000	11263X	PLUG	DRAIN
65	8600.184.000	11263H	PLUG	BREATHER
66	8600.390.000	11263D	SEAL	IMPUT BLANKING (RCA 35 X 8)
67	8600.438.000	11263E	SEAL	FRONT BLANKING (RCA 40 X 7)
68	8625.136.000	11263K	PLUG	OIL SIGHT
69	8675.189.080	11263NNNN	SCREW	USE G11500716, M8 X 30
70	8675.213.000	11359M	SCREW	M8 X 90 UN5931
71	2008.138.541	11359N	SHAFT	
	2008.139.676	11359P	SLEEVE	
		11359Q	SPACER	.591ID X 7/8 OD X 1-1/16 LG

RF. REF. REF. BEZUG	CODICE CODE CODE BESTELL.NR.	Q.TA' Q.TY Q.TE M.GE	DESCRIZIONE DESCRIPTION DESCRIPTION BESCHREIBUNG	DIMENSIONI DIMENSIONS DIMENSIONS ABMESSUNGEN	RF. REF. REF. BEZUG	CODICE CODE CODE BESTELL.NR.	Q.TA' Q.TY Q.TE M.GE	DESCRIZIONE DESCRIPTION DESCRIPTION BESCHREIBUNG	DIMENSIONI DIMENSIONS DIMENSIONS ABMESSUNGEN	RF. REF. REF. BEZUG	CODICE CODE CODE BESTELL.NR.	Q.TA' Q.TY Q.TE M.GE	DESCRIZIONE DESCRIPTION DESCRIPTION BESCHREIBUNG	DIMENSIONI DIMENSIONS DIMENSIONS ABMESSUNGEN
1	2008.001.101	1	SCATOLA - HOUSING CARTER - GEHAEUSE		39	8100.226.000	1	BOCCOLA - SLEEVE ENTRETOISE - ABSTANDSSTUCK	20x23x15	77				
2	2008.002.201	1	COPERCHIO - COVER COUVERCLE - DECKEL		40	8125.215.000	1	CHIAVETTA - KEY CLAVETTE - KEIL	6x6x50	78				
3	2008.137.541	1	ALBERO - SHAFT ARBRE - WELLE		41	8125.300.000	1	CHIAVETTA - KEY CLAVETTE - KEIL	10x8x25	79				
4	2008.007.542	1	ALBERO - SHAFT ARBRE - WELLE		42	8125.306.000	1	CHIAVETTA - KEY CLAVETTE - KEIL	10x8x30	80				
5	2008.009.542	1	ALBERO - SHAFT ARBRE - WELLE		43	8125.318.000	1	CHIAVETTA - KEY CLAVETTE - KEIL	10x8x40	81				
6	2008.011.098	1	FORCELLA - LEVER LEVER - HEBEL		44	8125.362.001	1	CHIAVETTA - KEY CLAVETTE - KEIL	12x8x30	82				
7	2008.012.098	1	FRENO - BRAKE FREIN - BREMSE		45	8200.128.001	2	CUSCINETTO - BEARING ROULEMENT - LAGER	6302 M.P.	83				
8	2008.135.041	1	TAMBURO - HUB MOYEU - NABE		46	8200.136.001	3	CUSCINETTO - BEARING ROULEMENT - LAGER	6202 M.P.	84				
9	2008.015.542	1	ALBERO - SHAFT ARBRE - WELLE		47	8200.164.001	3	CUSCINETTO - BEARING ROULEMENT - LAGER	6004 M.P.	85				
10	2007.038.442	3	INGRANAGGIO - GEAR ENGRENAGE - ZAHNRAD		48	8200.192.001	1	CUSCINETTO - BEARING ROULEMENT - LAGER	6205 M.P.	86				
11	2008.032.042	1	MOZZO - HUB MOYEU - NABE		49	8200.208.000	1	CUSCINETTO - BEARING ROULEMENT - LAGER	HK 3012	87				
12	2008.033.426	1	INGRANAGGIO - GEAR ENGRENAGE - ZAHNRAD		50	8200.240.001	1	CUSCINETTO - BEARING ROULEMENT - LAGER	6207 M.P.	88				
13	2008.038.426	1	INGRANAGGIO - GEAR ENGRENAGE - ZAHNRAD		51	8200.264.001	1	CUSCINETTO - BEARING ROULEMENT - LAGER	6208 M.P.	89				
14	2008.039.076	1	MANICOTTO - HUB MOYEU - NABE		52	8225.251.000	1	DADO - NUT ECROU - MUTTER	M8 DIN 982	90				
15	2008.041.098	1	LEVA - LEVER LEVER - HEBEL		53	8375.080.000	1	MOLLA - SPRING RESSORT - FEDER		91				
16	2008.046.041	1	OTTURATORE - PIN BOULON - ZAPFEN		54	8375.200.000	1	MOLLA - SPRING RESSORT - FEDER		92				
17	2008.048.676	1	DISTANZIALE - SLEEVE ENTRETOISE - ABSTANDSSTUCK		55	8500.189.000	2	RONDELLA - WASHER RONDELLE - BEILAGSSCHEIBE	D.8 UNI6592	93				
18	2008.052.048	1	PERNO - PIN BOULON - ZAPFEN		56	8525.152.000	1	SFERA - BALL BILLE - KUGEL	7/32"	94				
19	2008.055.041	1	BOCCOLA - SLEEVE ENTRETOISE - ABSTANDSSTUCK		57	8550.233.000	1	SPESSORE - SLEEVE ENTRETOISE - ABSTANDSSTUCK		95				
20	2008.068.426	1	INGRANAGGIO - GEAR ENGRENAGE - ZAHNRAD		58	8550.366.000	1	SPESSORE - SLEEVE ENTRETOISE - ABSTANDSSTUCK		96				
21	2008.069.426	1	INGRANAGGIO - GEAR ENGRENAGE - ZAHNRAD		59	8575.160.000	1	SPINA - PIN GOUPILLE - STIFT	3.5x40 UNI6874	97				
22	2008.070.442	1	ALBERO - SHAFT ARBRE - WELLE		60	8575.275.000	2	SPINA - PIN GOUPILLE - STIFT	6x20 UNI 1707	98				
23	2008.073.542	1	ALBERO - SHAFT ARBRE - WELLE		61	8575.289.000	1	SPINA - PIN GOUPILLE - STIFT	6x36 UNI6874	99				
24	2022.007.042	1	MOZZO - HUB MOYEU - NABE		62	8575.291.000	1	SPINA - PIN GOUPILLE - STIFT	6x40 UNI6874	100				
25	8001.139.000	1	SEEGER - CIRCLIP CIRCLIP - SICHERUNGSRING	D14E UNI 7433	63	8600.120.000	1	TAPPO OLIO - OIL PLUG BOUCHON - OELNFUELLSCHRAUBE	D 16 E	101				
26	8025.139.000	1	SEEGER - CIRCLIP CIRCLIP - SICHERUNGSRING	D14E DIN 471	64	8600.144.000	1	TAPPO OLIO - OIL PLUG BOUCHON - OELNFUELLSCHRAUBE	3/8" GAS	102				
27	2008.139.676	1	DISTANZIALE - SLEEVE ENTRETOISE - ABSTANDSSTUCK		65	8600.184.000	1	TAPPO OLIO - OIL PLUG BOUCHON - OELNFUELLSCHRAUBE	1/2" GAS	103				
28	8025.162.000	1	SEEGER - CIRCLIP CIRCLIP - SICHERUNGSRING	D 16 E	66	8600.390.000	2	TAPPO OLIO - OIL PLUG BOUCHON - OELNFUELLSCHRAUBE	RCA 35x8	104				
29	8025.209.000	1	SEEGER - CIRCLIP CIRCLIP - SICHERUNGSRING	D 20 E	67	8600.438.000	1	TAPPO OLIO - OIL PLUG BOUCHON - OELNFUELLSCHRAUBE	RCA 40	105				
30	8025.302.000	3	SEEGER - CIRCLIP CIRCLIP - SICHERUNGSRING	D 30 E	68	8625.136.000	1	TAPPO OLIO - OIL PLUG BOUCHON - OELNFUELLSCHRAUBE	3/8" GAS	106				
31	8600.215.000	1	ANELLO DI TENUTA - OIL SEAL BAGUE D'ETANCHEITE' - SIMMERRING	RCA 22	69	8675.189.080	12	VITE - SCREW BOULON - SCHRAUBE	M8x30 UNI5739	107				
32	8050.100.000	1	ANELLO DI TENUTA - OIL SEAL BAGUE D'ETANCHEITE' - SIMMERRING	20x35x6	70	8675.213.000	1	VITE - SCREW BOULON - SCHRAUBE	M8x90 UNI5931	108				
33	8050.256.000	1	ANELLO TENUTA - OIL SEAL BAGUE D'ETANCHEITE' - SIMMERRING	30x40x7	71	2008.138.541	1	ALBERO - SHAFT ARBRE - WELLE		109				
34	8050.448.000	1	ANELLO TENUTA - OIL SEAL BAGUE D'ETANCHEITE' - SIMMERRING	40x62x10	72					110				
35	8075.122.000	2	ANELLO DI TENUTA - OIL SEAL BAGUE D'ETANCHEITE' - SIMMERRING	OR 3050	73					111				
36	8075.100.000	1	ANELLO DI TENUTA - OIL SEAL BAGUE D'ETANCHEITE' - SIMMERRING	OR 109	74			M.P. = CUSCINETTI DI MARCA PRIMARIA M.P. = HIGH QUALITY BEARINGS		112				
37	8075.115.000	2	ANELLO DI TENUTA - OIL SEAL BAGUE D'ETANCHEITE' - SIMMERRING	OR 3043	75					113				
38	8100.222.000	1	BOCCOLA - SLEEVE ENTRETOISE - ABSTANDSSTUCK	18x20x15	76					114				