

- 15 CONDUIT TO BUTT AGAINST CABLE CLAMP AND TIE-BANDED AS SHOWN.
- 14 ALL TERMINALS IN CONNECTORS MUST BE MECHANICALLY TESTED TO ENSURE THAT TERMINALS ARE PROPERLY LATCHED INTO THE CONNECTOR BODY AND WILL NOT BACK OUT WHEN CONNECTORS ARE MATED.
- 13 VINYL COATED FIBERGLASS SLEEVING UL FR-1 RATED IN DIRECTION OF ARROW NEXT TO THE ASTRISK. EXAMPLES OF EACH ARE SHOWN BELOW:
 * (IN) (OUT) (DOWN) (UP) (LEFT) (RIGHT)
- 12 POINT OF HARNESS RETAINER MUST BE POINTED IN DIRECTION OF ARROW NEXT TO THE ASTRISK. EXAMPLES OF EACH ARE SHOWN BELOW:
 * (IN) (OUT) (DOWN) (UP) (LEFT) (RIGHT)
- 11 ALL BREAKOUTS LESS THAN 400 APART MUST BE ORIENTED AS SHOWN ON DRAWING.
- 10 H120435 HARNESS RETAINER TO BE SECURED AS SHOWN IN DETAIL "A". RETAINER TO BE INSERTED AT POINTS MARKED WITH AN "*" *
- 9 H120436 HARNESS RETAINER TO BE SECURED AS SHOWN IN DETAIL "A". RETAINER TO BE INSERTED AT POINTS MARKED WITH AN "*" *
- 8 CONDUIT MUST EXTEND INSIDE OF BOOT 25 MIN WHEN BOOT IS POSITIONED AS SHOWN AND WIRES MUST NOT BE TAPED TOGETHER BEYOND END OF CONDUIT.
- 7 CONNECTOR(S) AND BOOT MUST BE ORIENTED AS SHOWN.
- 6 BREAKOUTS, JUNCTIONS AND SPOT TAPED AREAS TO BE SECURED USING SCOTCH 33+ ELECTRICAL TAPE OR APPROVED EQUIVALENT 3 WRAPS MIN.
- 5 CONDUIT MUST BE RETAINED BY CABLE CLAMPING MECHANISM.
- 4
- 3
- 2
- 1 MUST CONFORM TO JDS-G153

This DRAWING and the information hereon are our PROPERTY and may be used by others only as authorized by U.S. unpublished-all rights reserved under the copyright laws. © REFERENCES: JDS-G25 GENERAL TOLERANCES JDS-G113 DRAFTING...

AMADAS INDUSTRIES

TOLERANCES: ±.20" or .251" UNLESS OTHERWISE NOTED			
SCALE	NO	REVISIONS	BY DATE
NONE			
DATE	04/06/00		
DRN	BAE		
APP	BE		
TITLE			NO.
Harness, Wiring LH Main			16293-1

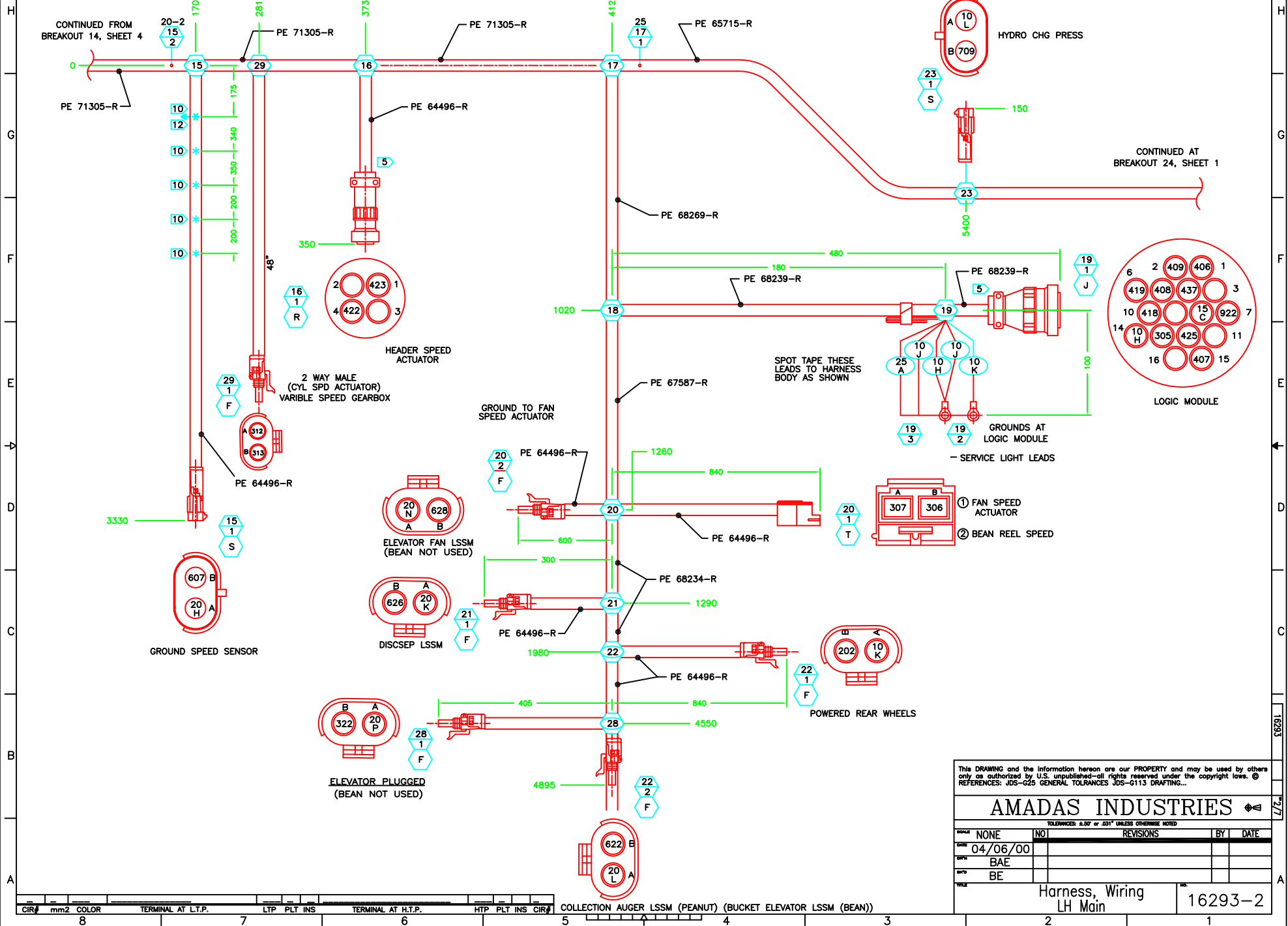
Y	PE 12015792	PE 12010973	2
X	PE 12010974	PE 12010300	2
W			
V			
T	PE 12033911		1
S	PE 12010973		2
R	AMP 206060-1	AMP 206358-1	1
P	AMP 207485-1	AMP 206512-1	1
N	AMP 206150-1	AMP 206512-1	1
M	H 130510	AMP 206138-1	1
L	AMP 206838-1		1
K	PE 12010975		1
J	AMP 206037-3	AMP 206322-1	4
H	AMP 206837-1	AMP 206512-1	1
G	PE 2962793		1
F	PE 12015792		11
E	AMP 206612-1	AMP 206512-1	1
D			
C	AMP 207377-1		1
B	PE 12020829		2
A	H 132513		2
ITEM	BODY	ACC.	QTY.

HD16-4-45

GROUNDING AT LH REAR SIDE SHEET

DEUTSCH DJD16-215

SIMILAR TO: AH145022



This DRAWING and the information hereon are our PROPERTY and may be used by others only as authorized by U.S. unpublished—all rights reserved under the copyright laws. © REFERENCES: JDS-G25 GENERAL TOLERANCES JDS-G113 DRAFTING...

AMADAS INDUSTRIES

TOLERANCES: 0.50" or .031" UNLESS OTHERWISE NOTED

NO	REVISIONS	BY	DATE
NONE			
04/06/00			
BAE			
BE			

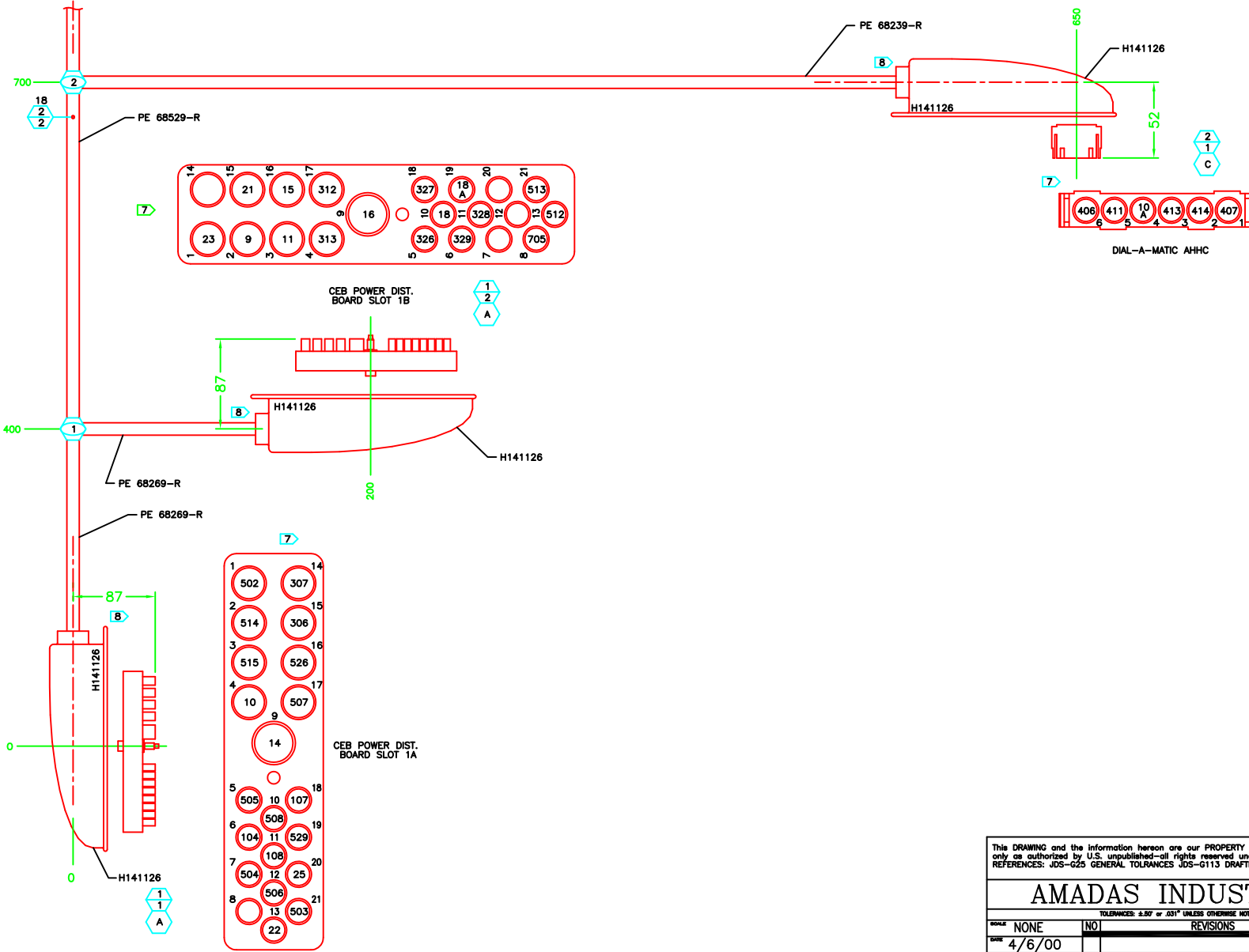
Harness, Wiring
LH Main

16293-2

CIR#	mm2	COLOR	TERMINAL AT L.T.P.	LTP	PLT	INS	TERMINAL AT H.T.P.	HTP	PLT	INS	CIR#
8											
7											
6											
5											
4											
3											
2											
1											

COLLECTION AUGER LSSM (PEANUT) (BUCKET ELEVATOR LSSM (BEAN))

CONTINUED AT
BREAKOUT 3, SHEET 4



This DRAWING and the information hereon are our PROPERTY and may be used by others only as authorized by U.S. unpublished-all rights reserved under the copyright laws. © REFERENCES: JDS-G25 GENERAL TOLERANCES JDS-G113 DRAFTING...

AMADAS INDUSTRIES				
<small>TOLERANCES: ±.007 or .031" UNLESS OTHERWISE NOTED</small>				
SCALE	NONE	NO	REVISIONS	BY DATE
DATE	4/6/00			
DRAWN	BAE			
CHECKED	BE			
TITLE			PART NO.	
Harness, Wiring LH Main			16293-5	

16293

5/7

A

CADAM/AutoCAD R14

4/6/00 BAE UPDATED FOR EMC

CIR#	MM2	COLOR	TERMINAL AT LOWER TERMINATION POINT	LTP	PLT	INS	TERMINAL AT HIGH TERMINATION POINT	HTP	PLT	INS	CIR#
9	3	RED	DEUTSCH 0462-203-12141	1/2	Ni		PE 2977490 (MB RING) W/ 9 A-LTP	24/1	Sn	3	9
9-A	2	RED	SHARED WITH 9-HTP	24/1	-		AMP 66601-3	25/1	Sn		9-A
10	2	BLK	DEUTSCH 0462-203-12141	1/1	Ni		PE 2977490 (MB RING) W/ 10 A-HTP	14/1	Sn	3	10
10-A	0.8	BLK	AMP 66598-6	2/1	Au		SEE 10-HTP	14/1	-		10-A
10-C	2	BLK	AMP 66601-4	3/1	Au		PE 2977490 (MB RING) W/ 10 E-HTP	14/1	Sn	3	10-C
10-E	2	BLK	AMP 66601-4	6/1	Au		SEE 10 C-HTP	14/1	-		10-E
10-F	2	BLK	PE 12124580 W/PE 12010293	10/2	Sn		PE 2977490 (MB RING) W/ 10 G-HTP	14/1	Sn	3	10-F
10-G	2	BLK	PE 12124580 W/PE 12010293	11/3	Sn		SEE 10 F-HTP	14/1	-		10-G
10-H	2	BLK	AMP 66601-4	19/1	Au		PE 2977490 (M5 RING) W/ 10 J-LTP	19/2	Sn	3	10-H
10-J	2	BLK	SEE 10 H-HTP	19/2	-		SWHS OVER END	19/3	-		10-J
10-K	0.8	BLK	PE 2989521 (MB RING)	19/2	Sn	3	PE 12089188 W/PE 12015323	22/1	Sn		10-K
10-L	0.8	BLK	PE 12089040 W/PE 12015323	23/1	Sn		PE 2977490 (MB RING) W/ 10 M-LTP	26/1	Sn	3	10-L
10-M	0.8	BLK	SEE 10 L-HTP	26/1	-		PE 12089040 W/PE 12015323	27/1	-		10-M
10-P	0.8	BLK	PE 2977490 (MB RING)	26/1	-		PE 12089188 W/PE 12015323	27/2	Sn		10-P
11	2	RED	DEUTSCH 0462-203-12141	1/2	Ni		AMP 66601-4	10/1	Au		11
12	1	RED	AMP 66601-4	10/1	Au		AMP 66601-4	13/3	Au		12
13	2	RED	AMP 66601-4	10/1	Au		AMP 2-35109-1 (M5 RING) W/ 13 A-LTP	24/1	Sn	1	13
13-A	2	RED	SEE 13-HTP	24/1	-		INTERLOCK AK-1220-2 (M5 RING)	24/2	Sn	3	13-A
14	13	RED	DEUTSCH 0462-203-04141	1/1	Ni		AMP 61352-1 (M5 RING)	24/1	Sn	3	14
15	2	RED	DEUTSCH 0462-203-12141	1/2	Ni		SPLICE 15	3/4	-		15
15-B	2	RED	SPLICE 15	3/4	-		AMP 66601-3	13/2	Sn		15-B
15-C	2	RED	SPLICE 15	3/4	-		AMP 66601-4	19/1	Au		15-C
16	8	RED	DEUTSCH 0462-203-04141	1/2	Ni		PE 200116 (MB RING) W/ 16 A-LTP	24/1	Sn	3	16
16-A	2	RED	SEE W/ 0421-203-04141	-	-		-	-	-		-
16-B	2	RED	SEE 16-HTP	24/1	-		AMP 66601-3	25/1	Sn		16-A
17	13	RED	DEUTSCH 0462-203-04141	13/1	Ni		PE 200116 (MB RING) W/ 17 A-LTP	24/1	Sn	3	17
17-A	2	RED	SEE 17-HTP	24/1	-		AMP 66601-3	25/1	Sn		17-A
18	1	RED	DEUTSCH 0462-201-16141	1/2	Ni		SPLICE 18	2/2	-		18
18-A	1	RED	DEUTSCH 0462-201-16141	1/2	Ni		SPLICE 18	2/2	-		18-A
18-B	3	RED	SPLICE 18	2/2	-		AMP 66740-2	13/3	Ag		18-B
19	8	RED	AMP 66741-2	13/3	Ag		PE 2965721 (#10 RING)	24/1	Sn	3	19
20-P		BLK	PE 12089188 W/PE 12015323								
20-R		BLK	SPLICE 20-1								
20-A	0.5	BLK	AMP 1-66105-3	3/1	Au		SPLICE 20-1	5/3	-		20-A
20-C	2	BLK	SPLICE 20-1	5/3	-		AMP 66601-4	6/1	Au		20-C
20-D	0.8	BLK	SPLICE 20-1	5/3	-		PE 12089040 W/PE 12015323	11/1	Sn		20-D
20-E	0.8	BLK	SPLICE 20-1	5/3	-		AMP 66361-5	11/2	Au		20-E
20-F	2	BLK	SPLICE 20-1	5/3	-		AMP 66601-4	13/3	Au		20-F
20-G	2	BLK	SPLICE 20-1	5/3	-		SPLICE 20-2	15/2	-		20-G
20-H	0.8	BLK	SPLICE 20-2	15/2	-		PE 12089040 W/PE 12015323	15/1	Sn		20-H
20-J	0.8	BLK	SPLICE 20-1	5/3	-		PE 12089188 W/PE 12015323	9/1	Sn		20-J
20-K	0.8	BLK	SPLICE 20-2	15/2	-		PE 12089188 W/PE 12015323	21/1	Sn		20-K
20-L	0.8	BLK	SPLICE 20-2	15/2	-		PE 12089188 W/PE 12015323	22/2	Sn		20-L
20-M	2	BLK	SPLICE 20-2	15/2	-		AMP 66601-3	25/1	Sn		20-M
20-N	0.8	BLK	SPLICE 20-2	15/2	-		PE 12089188 W/PE 12015323	20/2	Sn		20-N
20-P	0.8	BLK	PE 12089188 W/PE 12015323	28/1	-		PE 12089188 W/PE 12015323	25/2	Sn		20-P
20-R	0.8	BLK	SPLICE 20-1	5/3	-		PE 12089188 W/PE 12015323	9/2	Sn		20-R
21	2	RED	DEUTSCH 0462-203-12141	1/2	Ni		SPLICE 21	14/3	-		21
21-A	2	RED	SPLICE 21	14/3	-		AMP 66601-4	13/3	Au		21-A
21-B	2	RED	SPLICE 21	14/3	-		AMP 66601-3	25/1	Sn		21-B
22	2	RED	DEUTSCH 0462-209-16141	1/1	Ni		AMP 66601-4	13/3	Au		22
23	2	RED	DEUTSCH 0462-203-12141	1/2	Ni		AMP 66601-3	13/2	Sn		23
25	2	RED	DEUTSCH 0462-209-16141	1/1	Ni		SPLICE 25	17/1	-		25
25-A	2	RED	SPLICE 25	17/1	-		SWHS OVER END	19/3	-		25-A
25-B	2	RED	SPLICE 25	17/1	-		AMP 66601-3	25/1	Sn		25-B
34	2	RED	PE 12124580 W/PE 12010293	10/2	Sn		SPLICE 34	11/4	-		34
34-A	2	RED	PE 12124580 W/PE 12010293	11/3	Sn		SPLICE 34	11/4	-		34-A
34-B	2	RED	SPLICE 34	11/4	-		AMP 66601-4	13/3	Au		34-B
104	1	WHT	DEUTSCH 0462-201-16141	1/1	Ni		AMP 66601-4	10/1	Au		104
107	2	WHT	DEUTSCH 0462-209-16141	1/1	Ni		AMP 66601-3	25/1	Sn		107
108	0.8	WHT	DEUTSCH 0462-201-16141	1/1	Ni		AMP 66598-6	13/2	Au		108
112	2	WHT	AMP 66601-4	10/1	Au		AMP 66601-3	25/1	Sn		112
CIR#	MM2	COLOR	TERMINAL AT LOWER TERMINATION POINT	LTP	PLT	INS	TERMINAL AT HIGH TERMINATION POINT	HTP	PLT	INS	CIR#

CIR#	MM2	COLOR	TERMINAL AT LOWER TERMINATION POINT	LTP	PLT	INS	TERMINAL AT HIGH TERMINATION POINT	HTP	PLT	INS	CIR#
202	0.8	LT BLU	AMP 66598-6	13/2	Au		PE 12089188 W/PE 12015323	22/1	Sn		202
206	0.8	LT BLU	AMP 66598-6	10/1	Au		AMP 66360-8	12/1	Au		206
305	2	PNK	AMP 66601-3	13/2	Sn		AMP 66601-4	19/1	Au		305
306	2	PNK	DEUTSCH 0462-203-12141	1/1	Ni		PE 12020347	20/1	Sn		306
307	2	PNK	DEUTSCH 0462-203-12141	1/1	Ni		PE 12020347	20/1	Sn		307
312	2	PNK	DEUTSCH 0462-203-12141	1/2	Ni		AMP 66597-5	29/1	Au		312
313	2	PNK	DEUTSCH 0462-203-12141	1/2	Ni		AMP 66597-5	29/1	Au		313
322		PNK	PE 12089188 W/PE 12015323	28/1	Sn		PE 12089188 W/PE 12015323	25/2	Sn		322
326	0.8	PNK	DEUTSCH 0462-201-16141	1/2	Ni		AMP 66598-6	13/2	Au		326
327	0.8	PNK	DEUTSCH 0462-201-16141	1/2	Ni		AMP 66598-6	13/2	Au		327
328	0.8	PNK	DEUTSCH 0462-201-16141	1/2	Ni		AMP 66598-6	13/2	Au		328
329	0.8	PNK	DEUTSCH 0462-201-16141	1/2	Ni		AMP 66598-6	13/2	Au		329
402	2	LT GRN	SPLICE 402	8/2	-		AMP 66601-4	13/2	Au		402
402-A	2	LT GRN	PE 12124582 W/PE 12010293	8/1	Sn		SPLICE 402	8/2	-		402-A
402-B	0.8	LT GRN	AMP 66598-6	3/1	Sn		SPLICE 402	6/2	-		402-B
406	2	LT GRN	AMP 66601-4	2/1	Sn		AMP 66601-4	19/1	Au		406
407	2	LT GRN	AMP 66601-4	2/1	Sn		AMP 66601-4	19/1	Au		407
408	2	LT GRN	AMP 66601-3	13/2	Sn		AMP 66601-4	19/1	Au		408
409	2	LT GRN	AMP 66601-3	13/2	Sn		AMP 66601-4	19/1	Au		409
411	2	LT GRN	AMP 66601-4	2/1	Au		AMP 66601-3	13/2	Sn		411
411-A	2	LT GRN	SPLICE 411	6/2	Sn		PE 12089188 W/PE 12015323	31/1	Sn		411-A
412	2	PNK	PE 12124582 W/PE 12010293	8/1	Sn		AMP 66601-4	6/1	Au		412
413	0.5	LT GRN	AMP 1-66105-3	2/1	Au		SPLICE 413	5/4	-		413
413-A	0.5	LT GRN	AMP 1-66105-3	5/4	-		PE 12089188 W/PE 12015323	31/1	Sn		413-A
413-B	0.5	LT GRN	SPLICE 413	5/4	-		AMP 1-66105-3	13/2	Au		413-B
414	0.5	LT GRN	AMP 1-66105-3	2/1	Au		SPLICE 414	5/5	-		414
414-A	0.5	LT GRN	SPLICE 414	5/5	-		PE 12089188 W/PE 12015323	31/1	Sn		414-A
414-B	0.5	LT GRN	SPLICE 414	5/5	-		AMP 1-66105-3	13/2	Au		414-B
418	2	LT GRN	AMP 66601-3	13/2	Sn		AMP 66601-4	19/1	Au		418
419	2	LT GRN	AMP 66601-3	13/2	Sn		AMP 66601-4	19/1	Au		419
422	1	LT GRN	AMP 66601-3	13/2	Sn		AMP 66601-4	16/1	Au		422
423	1	LT GRN	AMP 66601-3	13/2	Sn		AMP 66601-4	16/1	Au		423
425	2	LT GRN	AMP 66601-3	13/2	Sn		AMP 66601-4	19/1	Au		425
426	2	LT GRN	AMP 66601-3	13/2	Sn		PE 12089188 W/PE 12015323	30/1	Sn		426
427	2	LT GRN	AMP 66601-3	13/2	Sn		PE 12089188 W/PE 12015323	30/1	Sn		427
432		LT GRN	AMP 2-66								

THIS WIRE CHART IS CONTINUED FROM SHEET 6

CIR#	MM2	COLOR	TERMINAL AT LOWER TERMINATION POINT	LTP	PLT	INS	TERMINAL AT HIGH TERMINATION POINT	HTP	PLT	INS	CIR#
502	2	BRN	DEUTSCH 0462-203-12141	1/1	Ni		SPLICE 502	6/3	-		502
502-A	2	BRN	SPLICE 502	6/3	-		AMP 66601-4	10/1	Au		502-A
502-B	2	BRN	SPLICE 502	6/3	-		AMP 66601-4	12/1	Au		502-B
503	1	BRN	DEUTSCH 0462-201-16141	1/1	Ni		AMP 66601-4	12/1	Au		503
504	0.8	BRN	DEUTSCH 0462-201-16141	1/1	Ni		AMP 66360-8	12/1	Au		504
505	0.8	BRN	DEUTSCH 0462-201-16141	1/1	Ni		AMP 66360-8	12/1	Au		505
506	2	BRN	DEUTSCH 0462-209-16141	1/1	Ni		SPLICE 506-1	3/5	-		506
506-A	0.8	BRN	AMP 66360-8	3/1	Au		SPLICE 506-1	3/5	-		506-A
506-B	2	BRN	SPLICE 506-1	3/5	-		AMP 66597-5	11/2	Au		506-B
506-C	2	BRN	SPLICE 506-1	3/5	-		SPLICE 506-2	27/3	-		506-C
506-D	0.8	BRN	SPLICE 506-2	27/3	-		PE 12089040 W/PE 12015323	27/1	-		506-D
506-E	0.8	BRN	SPLICE 506-2	27/3	-		PE 12089040 W/PE 12015323	27/1	Sn		506-E
507	3	BRN	DEUTSCH 0462-203-12141	1/1	Ni		SPLICE 507	5/2	-		507
507-A	1	BRN	AMP 66601-4	3/1	Au		SPLICE 507	5/2	-		507-A
507-B	2	BRN	SPLICE 507	5/2	-		AMP 66601-4	10/1	Au		507-B
507-C	3	BRN	SPLICE 507	5/2	-		AMP 66740-2	13/3	Ag		507-C
508	1	BRN	DEUTSCH 0462-201-16141	1/1	Ni		AMP 66601-4	3/1	Au		508
512	0.8	BRN	DEUTSCH 0462-201-16141	1/2	Ni		AMP 66360-8	10/1	Au		512
513	0.8	BRN	DEUTSCH 0462-201-16141	1/2	Ni		AMP 66360-8	10/1	Au		513
514	2	BRN	DEUTSCH 0462-203-12141	1/1	Ni		SPLICE 514	3/2	-		514
514-A	0.8	BRN	AMP 66360-8	3/1	Au		SPLICE 514	3/2	-		514-A
514-B	1	BRN	SPLICE 514	3/2	-		AMP 66601-4	6/1	Au		514-B
514-C	1	BRN	SPLICE 514	3/2	-		AMP 66597-5	11/2	Au		514-C
515	2	BRN	DEUTSCH 0462-203-12141	1/1	Ni		SPLICE 515	3/3	-		515
515-A	0.8	BRN	AMP 66360-8	3/1	Au		SPLICE 515	3/3	-		515-A
515-B	1	BRN	SPLICE 515	3/3	-		AMP 66601-4	6/1	Au		515-B
515-C	1	BRN	SPLICE 515	3/3	-		PE 12124582 W/PE 12015323	27/1	Sn		515-C
515-D	1	BRN	SPLICE 515	3/3	-		PE 12124580 W/PE 12015323	27/2	Sn		515-D
522	2	BRN	AMP 66601-4	3/1	Au		AMP 66601-4	10/1	Au		522
523	2	BRN	AMP 66601-4	3/1	Au		AMP 66601-4	10/1	Au		523
526	3	BRN	DEUTSCH 0462-203-12141	1/1	Ni		AMP 66740-2	13/3	Ag		526
529	2	BRN	DEUTSCH 0462-209-16141	1/1	Ni		AMP 66601-4	6/1	Au		529
607	0.8	DK GRN	AMP 66360-8	12/1	Au		PE 12089040 W/PE 12015323	15/1	Sn		607
608	2	PNK	PE 12124582 W/PE 12010293	8/1	Sn		AMP 66601-4	6/1	Au		608
609	0.8	DK GRN	PE 12089040 W/PE 12015323	11/1	Sn		AMP 66360-8	13/3	Au		609
617	0.8	DK GRN	AMP 66360-8	6/1	Sn		AMP 66360-8	12/1	Au		617
622	0.8	DK GRN	AMP 66360-8	12/1	Au		PE 12089188 W/PE 12015323	22/2	Sn		622
626	0.8	DK GRN	AMP 66360-8	12/1	Au		PE 12089188 W/PE 12015323	21/1	Sn		626
628	0.8	DK GRN	AMP 66360-8	12/1	Au		PE 12089188 W/PE 12015323	20/2	Sn		628
635	0.8	DK GRN	PE 12089188 W/PE 12015323	9/1	Sn		AMP 66360-8	12/1	Au		635
635-A	2	DK GRN	PE 12089188 W/PE 12015323	9/2	-		SPLICE 635	9/3	-		635-A
653	0.5	DK BLU	AMP 1-66105-3	3/1	Au		AMP 1-66105-3	12/1	Au		653
654	0.5	DK BLU	AMP 1-66105-3	3/1	Au		AMP 1-66105-3	13/2	Au		654
705	0.8	PUR	DEUTSCH 0462-201-16141	1/2	Ni		SPLICE 705	14/2	-		705
705-A	0.5	PUR	AMP 1-66105-3	12/1	Au		SPLICE 705	14/2	-		705-A
705-B	0.8	PUR	SPLICE 705	14/2	-		AMP 66360-8	25/1	Au		705-B
709	0.8	PUR	AMP 66360-8	13/3	Au		PE 12089040 W/PE 12015323	23/1	Sn		709
914	2	ORG	AMP 66597-5	11/2	Au		DEUTSCH 0462-209-16141	13/1	Ni		914
922	2	ORG	AMP 66601-3	13/2	Sn		AMP 66601-4	19/1	Au		922
924	1	ORG	AMP 66601-4	10/1	Au		AMP 66601-4	12/1	Au		924
938	2	ORG	PE 2965142	5/1	Sn		AMP 66601-4	13/3	Au		938
CIR#	MM2	COLOR	TERMINAL AT LOWER TERMINATION POINT	LTP	PLT	INS	TERMINAL AT HIGH TERMINATION POINT	HTP	PLT	INS	CIR#

This DRAWING and the information hereon are our PROPERTY and may be used by others only as authorized by U.S. unpublished-all rights reserved under the copyright laws. © REFERENCES: JDS-G25 GENERAL TOLERANCES JDS-G113 DRAFTING...

AMADAS INDUSTRIES

TOLERANCES ±.007 or .031* UNLESS OTHERWISE NOTED	
NO. NONE	REVISIONS
DATE 4/6/00	BY
DRAWN BAE	DATE
CHECKED BE	
TITLE Harness, Wiring LH Main	
16293-7	